

Unveiling Masters in the City



OPERA GALLERY

30
YEARS

Unveiling Masters in the City

3 December 2024 — 2 January 2025

OPERA GALLERY



Foreword

In a tandem celebration of Miami’s significant cultural development since the early 1990s and Opera Gallery group’s founding in 1994 – ‘Unveiling Masters in the City’ presents a diverse range of masterful artworks in tribute to the city as an ever-expanding cultural capital.

Miami’s artistic landscape has dramatically changed over the past few decades. Founded in 1990, Art Miami arguably laid the groundwork for the city’s reputation to be forever shifted in 2002 when the first iteration of Art Basel launched in South Beach. Recognized for its distinctive Latin American influence and geographical position as a gateway between North and South America, Miami's role in the art world has outgrown its reputation as being a mere host to Art Basel. With a year-round creative ecosystem, supported by a thriving gallery scene, influential art collectors, and an increasing number of museums and cultural institutions.

Miami Art Week, by extension, has consistently been a large-scale representation of the art world’s best qualities: Fostering a sense of community, pushing boundaries, and cultivating change to encourage important conversations. Opera Gallery is proud to have contributed to not only the magic of Miami Art week, but the broader cultural scene in Miami for more than twenty years.

Over the years, Opera Gallery in Miami has presented museum quality exhibitions celebrating artistic genius spanning generations and mediums. From ‘Art in Action’, a comprehensive survey of Keith Haring’s oeuvre to ‘Picasso, Miró, Valdés: Spanish Masters, a Resonance’, an homage to twentieth century masters from Spain to ‘A Love Letter to Latin America’, a solo tribute to Fernando Botero, the aim of our exhibition programming has been to consistently surprise, delight and challenge the viewer.

In similar fashion, ‘Unveiling Masters in the City’ is an exhibition designed and curated as an eclectic presentation of Modern and Contemporary artistic mastery representative of Opera Gallery’s unique place within Miami’s cultural DNA since 2002. Featuring the work of 31 artists from different generations and created using a wide range of medium and materials, this exhibition is both a celebration of Opera Gallery Group’s 30 Year Anniversary and a love letter to the South Florida’s creative community, which we continually feel grateful to contribute to and learn from.

Gilles DYAN
Founder & Chairman
Opera Gallery Group

Dan BENCHETRIT
Director
Opera Gallery Miami

ARTWORKS



Detail of Fernand Léger, *Visage à la main*, 1950

Fernand LÉGER (1881 – 1955)

Visage à la main

1950

Ink and gouache on paper

Signed with the artist's initials and dated 'F.L. 50' on the lower right

21 x 16 in | 53.3 x 40.6 cm

PROVENANCE

Galerie d'art du Faubourg, Paris

Mr. and Mrs. Eugene John Lewis collection, New York, 1954

Hilary Dixon Lewis collection, New York, by descent

Private collection, by descent

Anon. sale; Phillips, New York, 15 November 2023, lot 159

EXHIBITED

Philadelphia Museum of Art, 'Philadelphia Collects 20th Century',
3 October–17 November 1963, exh. cat., p. 22, titled *Hand to Mouth*

CERTIFICATE

The Comité Léger has confirmed the authenticity of this work.



Fernand LÉGER (1881 – 1955)

Figurine and Red Vase

1951

Oil on canvas

Dated and signed '51 / F LEGER' on the lower right; titled, signed again and dated 'LA STATUETTE / et le VASE ROUGE / F. LEGER / 51' on the reverse

21.3 x 25.6 in | 54 x 65 cm

PROVENANCE

Atelier Fernand Léger, No. 177

Rupages collection, Grenoble, France

Galerie Maeght, Paris

Private collection, France, 1988

Private collection, Paris, by descent

Anon. sale; Sotheby's Paris, 21 April 2022, lot 5

Private collection

LITERATURE

Georges Bauquier, *Fernand Léger, Catalogue raisonné de l'oeuvre peint, 1949-1951*, Adrien Maeght Editeur, Paris, 2003, No. 1419, ill. in colour p. 178



Pablo PICASSO (1881 – 1973)

Trois hommes et femme nus

1967

Coloured crayon and wash on paper

Signed, dated and numbered 'Picasso / 1.9.67. V' on the lower right

22.2 x 29.5 in | 56.5 x 75 cm

PROVENANCE

Galerie Louise Leiris, Paris

Galerie di Meo, Paris

The Sanford and Late Jeanne Robertson collection, 1998

Sotheby's, New York, 15 November 2023, lot 126

EXHIBITED

Paris, Galerie Louise Leiris, 'Picasso. Dessins 1966-1967',

28 February–23 March 1968, exh. cat., No. 72, ill. p. 61

(titled *Suzanne et les vieillards*)

LITERATURE

Christian Zervos, *Pablo Picasso, Oeuvres de 1967 et 1968, vol. 27,*

Cahiers d'Art, Paris, 1973, No. 512, ill. pl. 188



Pablo PICASSO (1881 – 1973)

Personnage (Homme)

1970

Oil on plywood

Dated '23.12.70' on the reverse

50.4 x 32.1 in | 128 x 81.5 cm

PROVENANCE

Private collection

LITERATURE

Christian Zervos, *Pablo Picasso, Oeuvres de 1970, vol. 32*,
Cahiers d'Art, Paris, 1977, No. 338, ill. pl. 118

The Picasso Project, *Picasso's Paintings, Watercolors, Drawings and
Sculpture. A comprehensive Illustrated Catalogue 1885–1974. The Final
Years. 1970–1973*, Alan Wofsy Fine Arts, San Francisco, 2004,
No. 70–370, ill. p. 114

CERTIFICATE

Claude Picasso has confirmed the authenticity of this work.



Marc CHAGALL (1887 – 1985)

Profile

1959

Gouache, coloured pencils, Indian ink, coloured inks and pastel on Japanese paper

Signed 'Marc Chagall' in pencil on the lower right

26.4 x 20.7 in | 67 x 52.5 cm

PROVENANCE

Estate of the artist

Kornfeld, Bern, 18 September 2020, lot 19

Private collection

CERTIFICATE

The Comité Marc Chagall has confirmed the authenticity of this work.



Marc CHAGALL (1887 – 1985)

The Painter

1976

Oil on canvas

Signed ‘Marc Chagall’ on the lower right; signed ‘Marc Chagall’ on the reverse

25.6 x 21.3 in | 65 x 54 cm

PROVENANCE

Artist's studio

Pierre Matisse Gallery, New York

Christie's, New York, 15 May 1990, lot 81

Private collection

Anon. sale; Christie's, New York, 14 May 2022, lot 845

Private collection

EXHIBITED

Paris, Musée du Louvre, Pavillon de Flore, 'Marc Chagall : Peintures récentes, 1967-1977', 17 October 1977–2 January 1978, No. 60, ill.

Tokyo, Fuji Television Gallery, Marc Chagall, 'Recent Works: Oil, Acrylic, Tempera, Tapestry, Prints', March 1979, No. 5, ill.

New York, Pierre Matisse Gallery, 'Marc Chagall: Paintings and Temperas, 1975-1978', May 1979, exh. cat. No. 8, ill. in colour

CERTIFICATE

The Comité Marc Chagall has confirmed the authenticity of this work.



Marc CHAGALL (1887 – 1985)

Couple in the Moonlight

1980-1981

Tempera, oil and coloured inks on canvas

Signed 'Marc Chagall' on the lower right

39.4 x 28.7 in | 100 x 73 cm

PROVENANCE

Estate of the artist, and thence by descent

Christie's, Hong Kong, 1 December 2022, lot 108

Private collection

CERTIFICATE

The Comité Marc Chagall has confirmed the authenticity of this work.



Joan MIRÓ (1893 – 1983)

Femme dans la nuit

1942

Gouache, pastel, pencil and watercolour on paper
Signed 'Miró' on the lower right; signed again, titled, dated and situated 'Joan Miró / Femmes dans la nuit / x / Barcelone, 24-12-1942.' on the reverse
25.2 x 18.9 in | 64 x 48 cm

PROVENANCE

Pierre Matisse Gallery, New York
Hilda Sutton collection, January 1958
Private collection, by descent
Private collection, Switzerland, 1993
Christie's, New York, 7 May 2009, lot 141
Private collection
Anon. sale; Christie's, New York, 13 May 2023, lot 488
Private collection

EXHIBITED

Bern, Kunsthalle Bern, 'Joan Miró', April–May 1949, exh. cat., No. 48, p. 10
London, Helly Nahmad Gallery, 'Joan Miró: A Retrospective', October 1999–January 2000, exh. cat., No. 20, p. 76, ill. in colour p. 30

LITERATURE

Jacques Dupin and Ariane Lelong-Mainaud, Joan Miró. Catalogue raisonné. Drawings, vol. II: 1938–1959, Daniel Lelong and Successió Miró, Paris, 2010, No. 1042, ill. in colour p. 129



Joan MIRÓ (1893 – 1983)

Personnage (Character)

1974

Oil on canvas

Signed 'Miró' on the lower left; signed, titled and dated 'MIRO.
/ 3/I/74 / Personnage' and dedicated 'à Jean Leymarie, / bien
affectueusement Miró. 20/XII/75.' on the reverse; dated '3/I/74.'
and titled 'Personnage' on the stretcher

24.4 x 19.7 in | 62 x 50 cm

PROVENANCE

Jean Leymarie collection, Paris, 1975, gift of the artist

Private collection, France, by descent

Private collection

EXHIBITED

Barcelona, Mayoral, 'The Space of Dreams', 2017, exh. cat., ill.

LITERATURE

Jacques Dupin and Ariane Lelong-Mainaud, *Joan Miró, Catalogue
Raisonné, Drawings, vol. VI: 1978–1981*, Daniel Lelong and Successió
Miró, Paris, 2018, No. A20, ill. in colour p. 340

CERTIFICATE

The ADOM has confirmed the authenticity of this work.



Alexander CALDER (1898 – 1976)

Caged Stone on Yellow Stalk

Circa 1955

Sheet metal, rod, stone, wire and paint

Unique piece

Incised with the artist's monogram 'CA' on the black element

75 x 42 x 24.5 in | 190.5 x 106.7 x 62.2 cm

PROVENANCE

Perls Galleries, New York

Ruth Page collection, Chicago

Richard Gray Gallery, Chicago, 1983

Jeffrey Hoffeld and Co. Inc., New York

Private collection, New York, 1984

Richard Gray Gallery, Chicago

Gerald Fineberg collection, 2010

Christie's, New York, 17 May 2023, lot 29C

Private collection

EXHIBITED

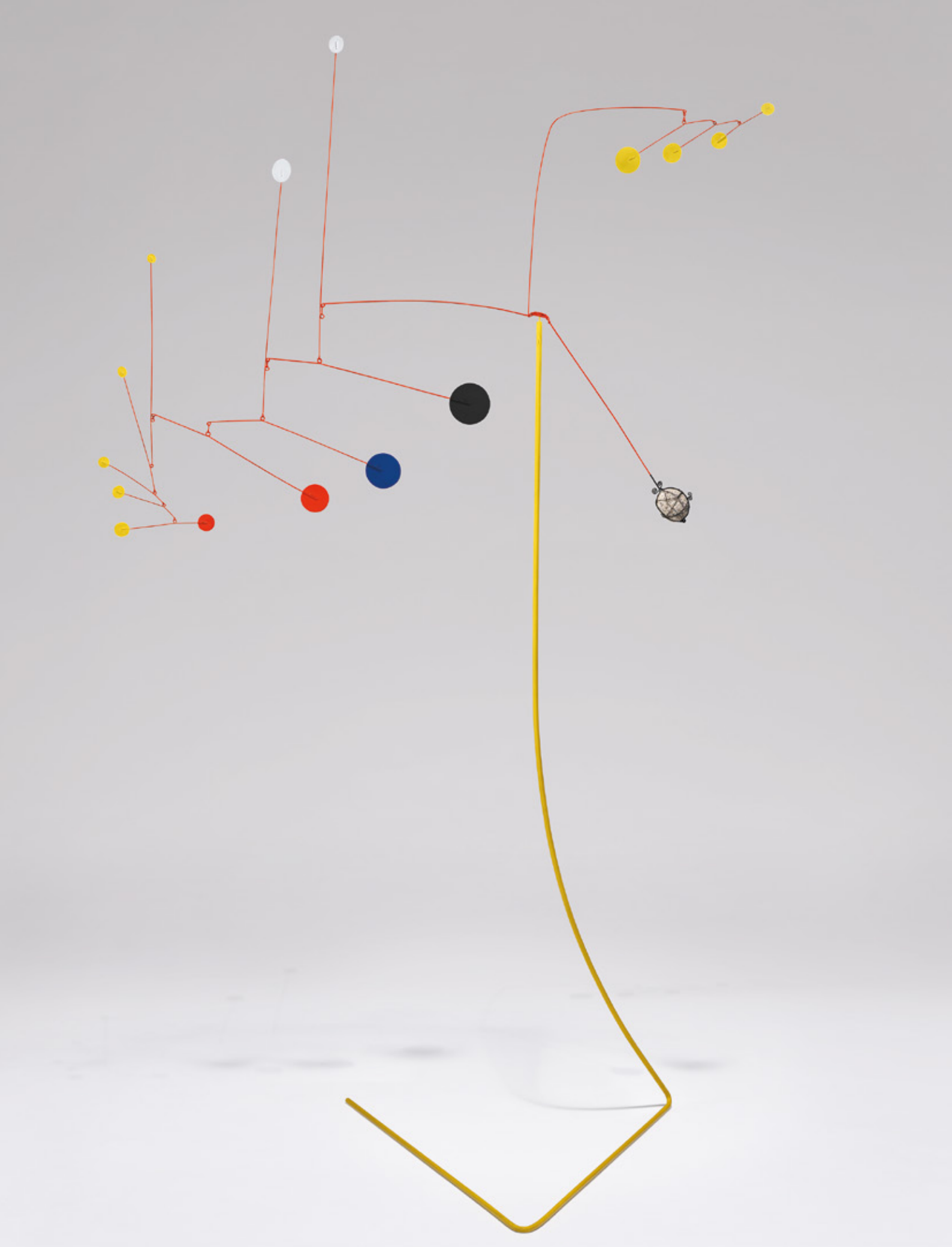
Pittsfield, Berkshire Museum, 'Mobiles by Alexander Calder', 2–31 July 1966, exh. cat., n.p., titled

Caged Stone on Red Stalk

Chicago, Richard Gray Gallery, 'Modern and Contemporary Masters: Paintings, Sculpture and

Drawings', 11 February–24 March 1984, exh. cat., n.p., No. 13, ill. as *Caged Stone on Red Stalk*

The Calder Foundation has registered this work in their archives.



Alexander CALDER (1898 – 1976)

Brothers, Right

1965

Gouache and ink on paper

Signed and dated 'Calder 65' on the lower right

29.5 x 42.5 in | 74.9 x 108 cm

PROVENANCE

Perls Galleries, New York

Mr. and Mrs. Eugene John Lewis collection, Philadelphia, 1971

Hilary Dixon Lewis collection, New York, by descent

Private collection, by descent

Anon. sale; Phillips, New York, 15 November 2023, lot 161

The Calder Foundation has registered this work in their archives.



Jean DUBUFFET (1901 – 1985)

Buste aux envols

1972

Polyurethane paint on epoxy resin

Unique piece

Signed with the artist's initials and dated 'J.D. 72'

on the lower right edge

44 x 29 x 19 in | 111.8 x 73.7 x 48.3 cm

PROVENANCE

Mr. and Mrs. Morton and Linda Janklow collection, New York

Private collection

Anon. sale; Phillips, London, 7 March 2024, lot 25

EXHIBITED

New York, The Solomon R. Guggenheim Museum, 'Jean Dubuffet:

A Retrospective Glance at Eighty', 31 July–27 September 1981,

exh. cat., p. 29

LITERATURE

Max Loreau (ed.), *Catalogue des travaux de Jean Dubuffet, Fascicule XXVII : Coucou Bazar*, Weber Editeur, Paris, 1976, No. 288, pp. 165, 237, 244, ill. p. 165



Jean DUBUFFET (1901 – 1985)

Scène tragique (site avec deux personnages)

1974

Vinyl on canvas

Signed with the artist's initials and dated 'J.D. 74' on the lower right; signed again, tiled and dated 'Scène tragique J. Dubuffet 74' on the reverse

107.7 x 73 in | 273 x 186 cm

PROVENANCE

Collection Renault, Boulogne-Billancourt, France

EXHIBITED

Paris, Centre National d'Art Contemporain, 'Paysages castillans, site tricolores', 19 February–5 March 1975, exh. cat., n.p., No. 1, ill.

Mexico City, Museo Tamayo Arte Contemporaneo, 'La Máquina Y El Juglar. Obras De La Colección Renault', 8 December 2005–26 February 2006, exh. cat., No. 34

Curitiba, Museu Oscar Niemeyer, 16 May–9 August 2009; São Paulo, Museu de Arte Contemporânea da Universidade de São Paulo, 10 September–15 December 2009, 'Uma aventura moderna-coleção de arte Renault', exh. cat., ill. in colour p. 70

LITERATURE

Max Loreau (ed.), *Catalogue des travaux de Jean Dubuffet, Fascicule XXVIII : Roman burlesque, Sites tricolores*, Les Éditions de Minuit, Paris, 1979, No.155b, ill. p. 117

Ann Hindry, *Renault and Art. A Modern Adventure*, Hazan, Paris, 1999, ill. in colour p. 194

Ann Hindry and Micheline Renard, *Renault. La Collection d'art. De Doisneau à Dubuffet, une aventure pionnière*, Flammarion, Paris, 2009, ill. in colour pp. 32, 71





Detail of Roberto Matta, *Je viens du fruit perdu*, 1988

Roberto MATTA (1911 – 2002)

Je viens du fruit perdu

1988

Oil on canvas

Signed on the lower right; inscribed with the number
of the catalogue raisonné, titled and dated '88|13 /

"Je viens du fruit perdu" / 1988' on the reverse

85.8 x 106.3 in | 218 x 270 cm

PROVENANCE

Private collection, Paris

Galeria Almirante, Madrid

Collection Museo Torre Laguna, Torrelaguna, Spain

Private collection, Spain

EXHIBITED

Munich, Hypoculturstiftung, 'Matta', 20 September–11 November 1991,
exh. cat., No. 36, ill. in colour p. 169

Tokyo, Fuji Tv Gallery, 'One's own Ocean', 12 January–23 March 1993,
exh. cat., No. 3, ill. in colour

Madrid, Galeria Amirante, 'Cere Cerera, Matta',April–June, 1999,
exh. cat., No. 29, ill. in colour p. 51

CERTIFICATE

The Archives de l'oeuvre de Matta has confirmed the authenticity
of this work



Pierre SOULAGES (1919 – 2022)

Gouache sur papier, 65 x 50 cm, 1960
1960

Gouache on paper laid down on canvas
Signed and dated '60' on the lower right
25.6 x 19.7 in | 65 x 50 cm

PROVENANCE
Private collection
Koller, Zurich, 7 December 2007, lot 3304
Private collection, Europe
Private collection, Europe, by descent
Anon. sale; Sotheby's, Paris, 23 April 2024, lot 17

LITERATURE
Pierre Daix and James Johnson Sweeney, *Pierre Soulages*.
L'oeuvre 1947-1990, Ides et Calendes, Neuchâtel 1991,
No. 96, ill. in colour, p. 93

CERTIFICATE
The artist has confirmed the authenticity of this work.



Pierre SOULAGES (1919 – 2022)

Brou de noix et collage sur papier marouflé sur toile
75 x 108 cm, 2004

2004

Walnut stain on paper mounted on linen

Signed 'Soulages' on the lower right

29.5 x 42.5 in | 75 x 108 cm

PROVENANCE

Bernard Jacobson Gallery, London

Dominique Lévy, New York

Haim Chanin Fine Arts, New York

Private collection

Anon. sale; Phillips, London, 16 April 2021, lot 248

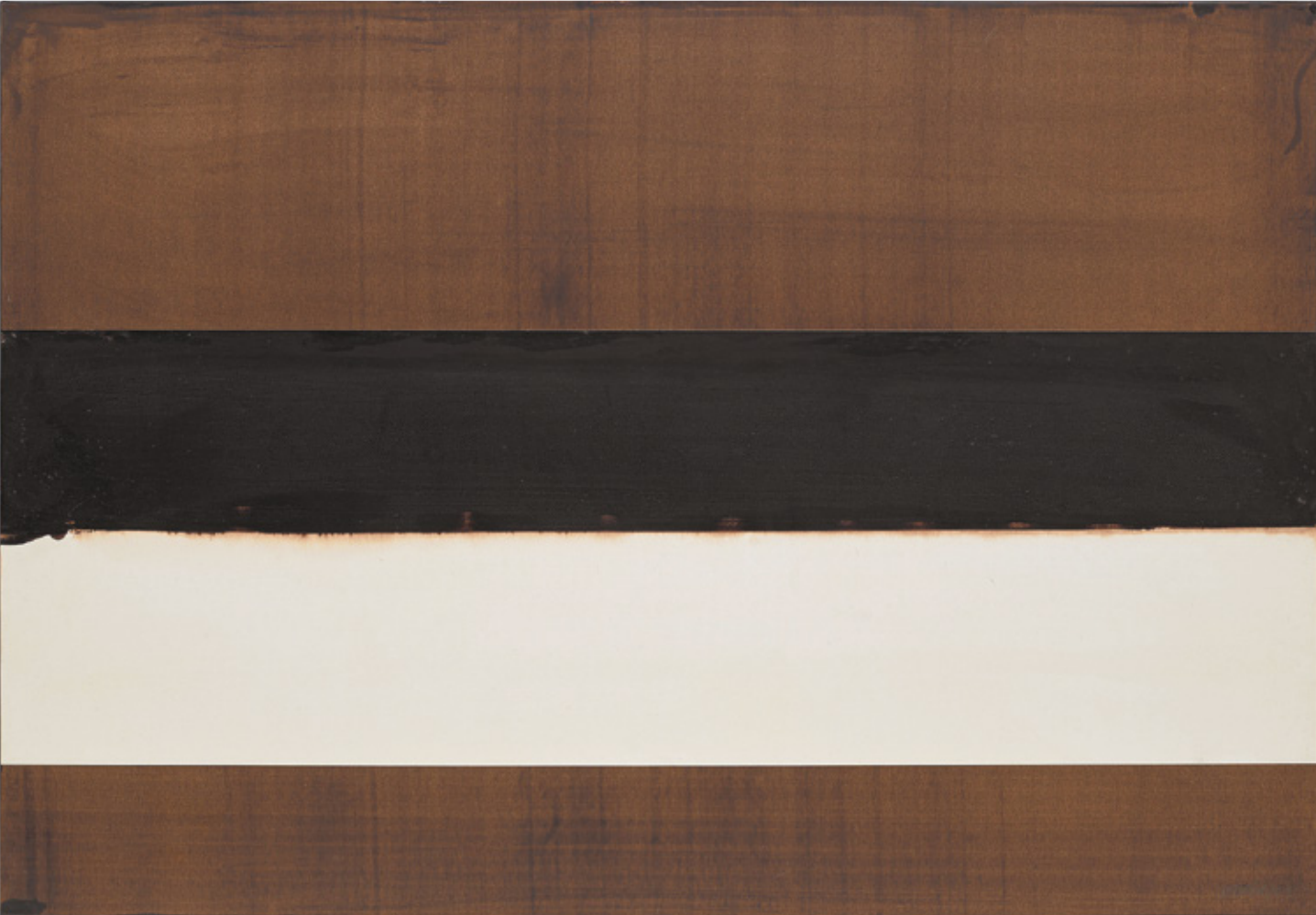
Private collection

EXHIBITED

London, Bernard Jacobson Gallery, 'Pierre Soulages: New Paintings',
24 June–1 September 2010

CERTIFICATE

The artist has confirmed the authenticity of this work.



Karel APPEL (1921 - 2006)

Space Animals

1970

Acrylic on canvas

Signed and dated 'appel 70' on the lower left

46.5 x 58.3 in | 118.1 x 148 cm

PROVENANCE

Martha Jackson Gallery, New York

Galerie Moos, Geneva

Private collection

Anon. sale; Christie's, New York, 12 November 2003, lot 416

Private collection, New York

EXHIBITED

New York, Martha Jackson Gallery, 'Karel Appel: Sculpture, Reliefs and Paintings', 20 October–13 November 1971

Stratford, Ontario, Rothman's Art Gallery; Victoria, British Columbia, Art Gallery of Greater Victoria; Edmonton, Alberta, The Edmonton Art Gallery; Winnipeg, Manitoba, The Winnipeg Art Gallery; Halifax, Nova Scotia, Dalhousie University Art Gallery; London, Ontario, London Public Library; Hamilton, Ontario, Art Museum and Art Gallery of Hamilton; New York, New York Cultural Center; Miami, Miami Art Center; Oklahoma City, Oklahoma Art Center; Fort Lauderdale, Florida, Fort Lauderdale Museum of Art; Phoenix, Arizona, Phoenix Art Museum', 'Appel's Appels', June 1972–September 1974, exh. cat., p.62, ill. in colour pl. 64



Sam FRANCIS (1923 – 1994)

Untitled

1965

Acrylic on paper

Signed, dated and inscribed 'Sam Francis / 1965 / L.A.' on the reverse

29.1 x 40.2 in | 74 x 102 cm

PROVENANCE

Sam Francis Estate, Glendale, USA

Jonathan Novak Contemporary Art, Los Angeles, USA,
September 2003

Sotheby's, London, October 2007, lot 221

Private collection, Europe

EXHIBITED

Boca Raton, Bruk Kahan Gallery, 'Sam Francis: Paintings/Works on Paper
1947-1990', 4 February–1 April 2000

The Sam Francis Estate has registered this work in their archives
and online catalogue raisonné.





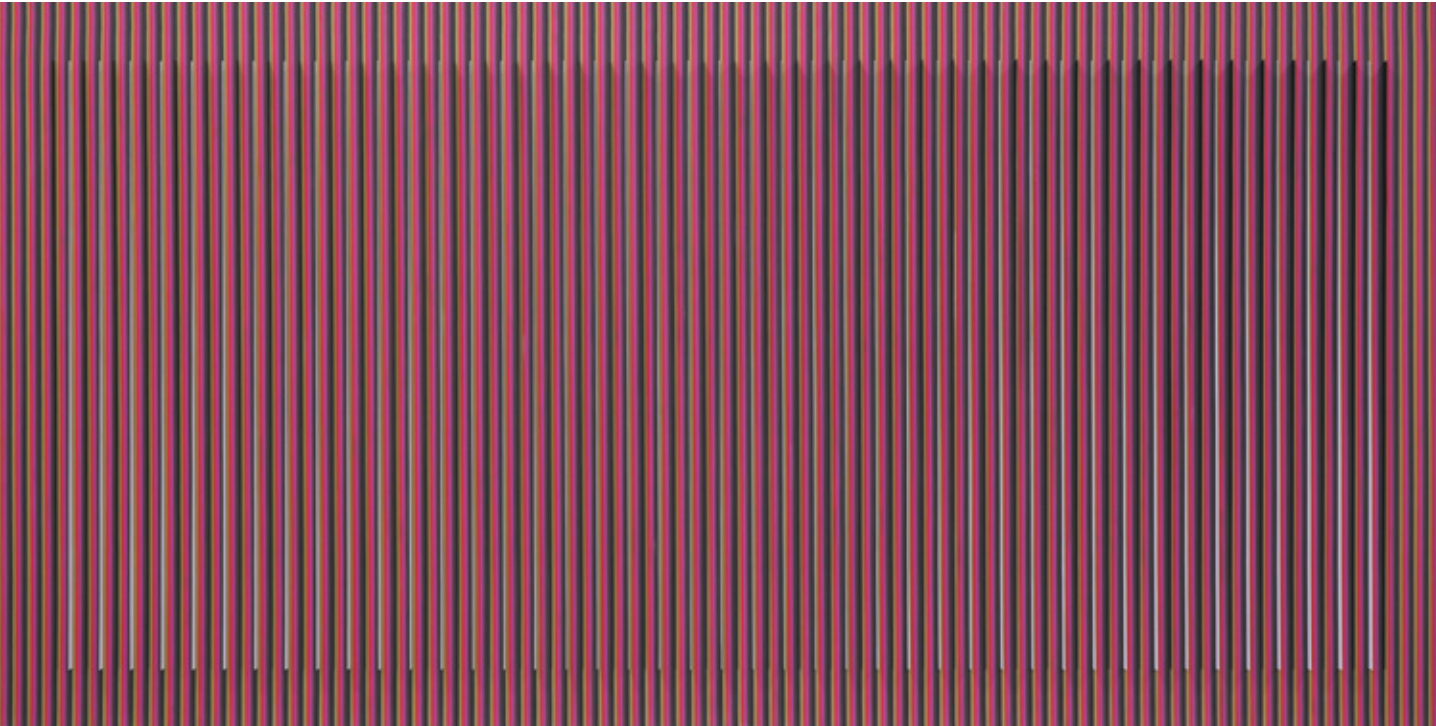
Detail of Carlos Cruz-Diez, *Physichromie Panam 2129*, 1984

Carlos CRUZ-DIEZ (1923 – 2019)

Physichromie Panam 2129
1984

Screensprint on aluminium
47.2 x 94.5 in | 120 x 240 cm

PROVENANCE
Articruz / Cruz Mendoza Family

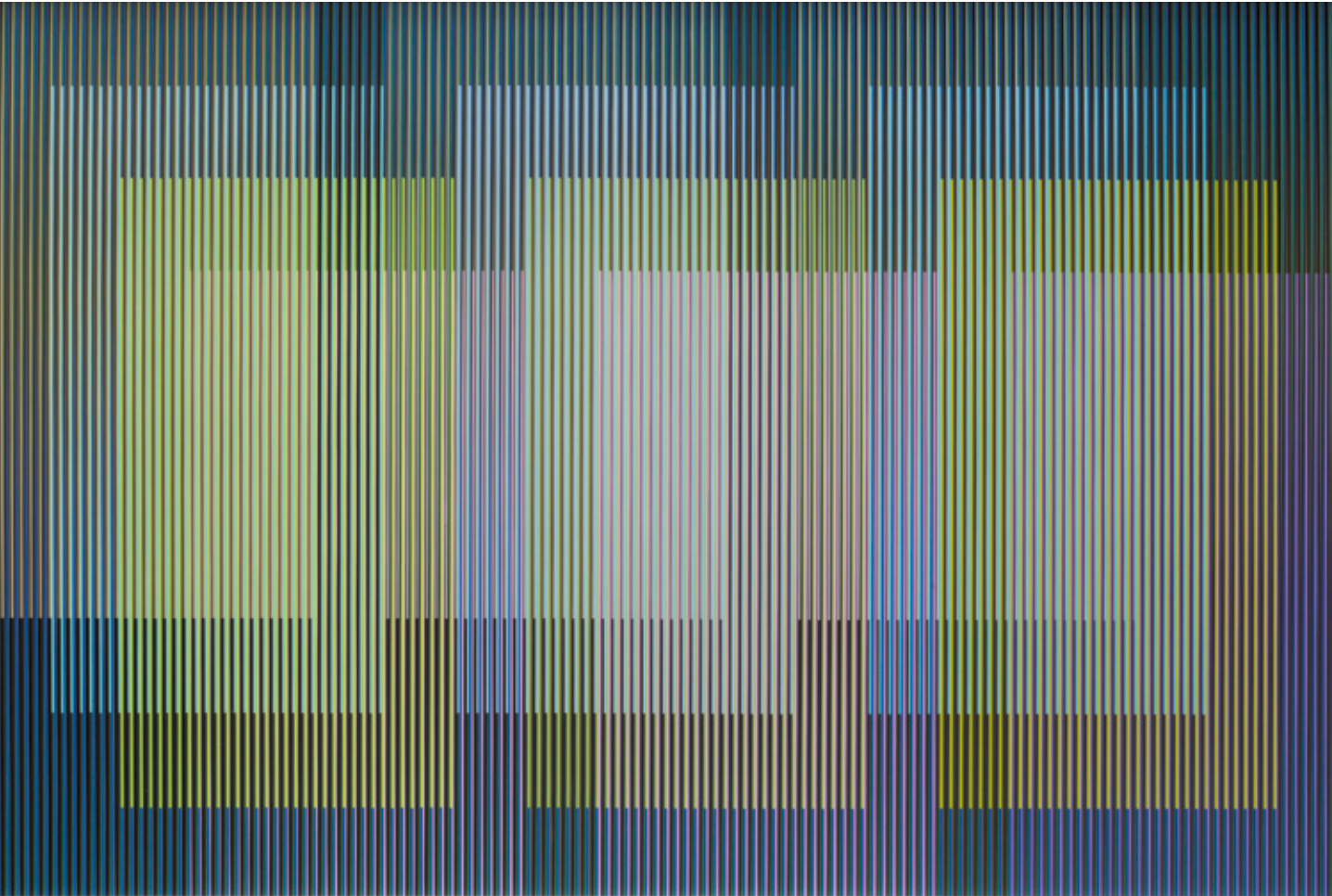


Carlos CRUZ-DIEZ (1923 – 2019)

Physichromie Panam 246
2015

Chromography on aluminium
Signed on the reverse
39.4 x 59.1 in | 100 x 150 cm

PROVENANCE
Articruz / Cruz Mendoza Family

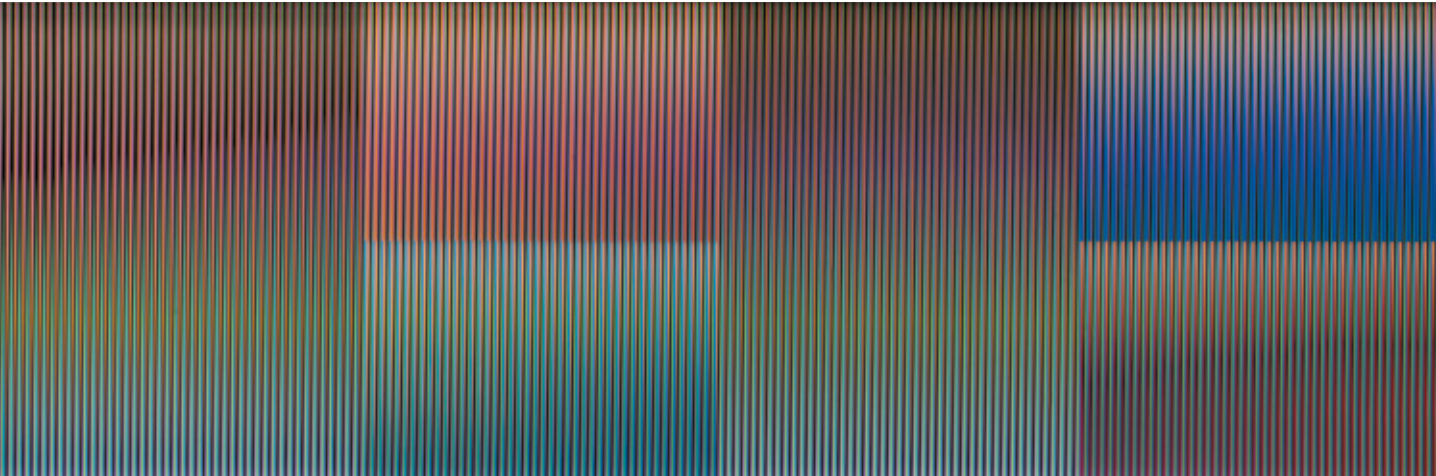


Carlos CRUZ-DIEZ (1923 – 2019)

Physichromie Panam 286
2018

Chromography on aluminium
Signed on the reverse
59.1 x 177.2 in | 150 x 450 cm

PROVENANCE
Articruz / Cruz Mendoza Family



Jean Paul RIOPELLE (1923 – 2002)

Vérone

1962

Oil on canvas

Signed and dated 'riopelle / 62' on the lower right; titled 'Vérone'
on the stretcher

19.5 x 28.5 in | 49.5 x 72.4 cm

PROVENANCE

Galerie Bonnier, Lausanne, Switzerland

Private collection

EXHIBITED

Lausanne, Galerie Bonnier, 'Jean Paul Riopelle', Summer 1963, No. 15

Stockholm, Svensk-Franska Konstgalleriet, 'Riopelle', September 1963

LITERATURE

Yseult and Tanguy Riopelle, *Jean Paul Riopelle. Catalogue Raisonné, Tome 3, 1960–1965*, Hibou Éditeurs, Montreal, 2009, No. 1962.036H.1962, ill. p. 161



Philippe HIQUILY (1925 – 2013)

L'Epicurienne
2010

Corten steel
Edition of 8
Signed 'Hiquily'
70.9 x 29.5 x 35.4 in | 180 x 75 x 90 cm

PROVENANCE
Estate of the artist



Featured artwork: Philippe Hiquily, *L'Epicurienne*, 2011, Corten steel, 108.3 x 47.2 x 55.1 in | 275 x 120 x 140 cm

Alex KATZ (b. 1927)

Hope

2012

Oil on linen

Signed and dated 'Alex Katz 12' on the overlap

50 x 40 in | 127 x 101.6 cm

PROVENANCE

Gavin Brown's enterprise, New York

Rosa de la Cruz collection, Miami, 2012

Christie's, New York, 17 May 2024, lot 118

EXHIBITED

Miami, de la Cruz Collection, 'Selections from the de la Cruz Collection', December 2013–November 2014

Miami, de la Cruz Collection, 'A Possible Horizon', September 2020–November 2021

Miami, de la Cruz Collection, 'There is Always One Direction', November 2021–November 2022

Miami, de la Cruz Collection, 'House in Motion/New Perspectives', December 2023–March 2024



Alex KATZ (b. 1927)

Autumn 6

2022

Oil on linen

Signed on the side of the canvas

96 x 60 in | 243.8 x 152.4 cm

PROVENANCE

Private collection



Andy WARHOL (1928 – 1987)

Four Multicolored Marylins (Reversal Series)

1979-1986

Acrylic and silkscreen ink on canvas

Stamped twice with the artist's signature 'Andy Warhol' on the overlap

40 x 40 in | 101.6 x 101.6 cm

PROVENANCE

Waddington Galleries, Ltd., London

Private collection

Anon. sale; Sotheby's, New York, 9 May 1990, lot 344

Jerry Moss collection, USA

Christie's, New York, 9 November 2023, lot 57B

EXHIBITED

London, Waddington Galleries, 'Andy Warhol: Reversal Series', 2–26
September 1987, exh. cat., No. 13, ill. pp. 28-29 and on the front cover



Yayoi KUSAMA (b. 1929)

Gold Accumulation 2

1999

Acrylic on canvas
Signed and dated 'Yayoi Kusama / 1999' on the reverse
46.1 x 35.8 in | 117 x 91 cm

PROVENANCE
Anon. sale, Sotheby's, New York, 10 November 2004, lot 585
Private collection
Phillips, New York, 13 May 2011, lot 222
Private collection

CERTIFICATE
Yayoi Kusama Inc. has confirmed the authenticity of this work.



Yayoi KUSAMA (b. 1929)

Chii-chan

2004

Water paint on efrethane

Signed and dated 'Yayoi Kusama / 2004' on the back

88.6 x 32.9 x 33.3 in | 225 x 83.5 x 84.5 cm

PROVENANCE

Anon. sale; Seoul Auctions, Hong Kong, 26 May 2013, lot 44

Liu Yiqian and Wang Wei collection, China

Sotheby's, Hong Kong, 5 October 2023, lot 8529

LITERATURE

Noriko Yamazaki (ed.), *Yayoi Kusama Locus of The Avant-Garde*,
Nippan Editions, Nagano, 2017, ill. in colour pp. 77 and 135

CERTIFICATE

Yayoi Kusama Inc. has confirmed the authenticity of this work.



Yayoi KUSAMA (b. 1929)

Chin

2004

Mixed media

Unique piece

Signed and dated 'Yayoi Kusama / 2004' on the underside

28 x 37 x 15 in | 71 x 94 x 38 cm

PROVENANCE

Anon. sale; Seoul Auctions, Hong Kong, 26 May 2013, lot 44

Liu Yiqian and Wang Wei collection, China

Sotheby's Hong Kong, 5 October 2023, lot 8504

EXHIBITED

Tokyo, Mori Art Museum, 'KUSAMATRIX', 7 February–9 May 2004

Shanghai, Long Museum, 'SHE: International Women Artists
Exhibition', 23 July–30 October 2016

LITERATURE

Noriko Yamazaki (ed.), *Yayoi Kusama Locus of The Avant-Garde*, Nippan
Editions, Nagano, 2017, ill. in colour pp. 76 and 135

CERTIFICATE

Yayoi Kusama Inc. has confirmed the authenticity of this work.





Detail of Juan Genovés, *Aquí Allá*, 2015

Juan GENOVÉS (1930 – 2020)

Aquí Allá
2015

Acrylic on canvas on board
Signed and dated 'genovés /15' on the lower right
59.1 x 47.2 in | 150 x 120 cm

PROVENANCE
Estate of the artist



Juan GENOVÉS (1930 – 2020)

Incisión

2019

Acrylic on board

Signed 'genovés / 19' on the lower right

98.4 x 70.9 in | 250 x 180 cm

PROVENANCE

Estate of the artist



Antonio SAURA (1930 – 1998)

Mirra

1956

Oil on canvas

Signed and dated 'Saura 56' on the upper right

63.4 x 51.2 in | 161 x 130 cm

PROVENANCE

Rodolphe Stadler collection, Paris

Christie's, Paris, 4 June 2013, lot 16

Private collection, Paris

Marlborough Gallery, Madrid

Private collection, Spain

LITERATURE

Gérard de Cortanze, *Antonio Saura*, Éditions de La Différence, Paris, 1994, ill. in colour p. 106

The Fondation Archives Antonio Saura has registered this work in their archives.



Antonio SAURA (1930 – 1998)

Don 1.91

1991

Oil and acrylic on canvas

Signed and dated 'SAURA / 91' on the upper right

51.2 x 38.2 in | 130 x 97 cm

PROVENANCE

Succession Antonio Saura, Geneva

EXHIBITED

Bern, Kunstmuseum Bern, 'Antonio Saura: Die Retrospektive',
6 July–11 November 2012 ; Museum Wiesbaden, 30 November
2012–24 March 2013, exh. cat., ill. p. 156

LITERATURE

Matthias Frehner, Natalia Granero, *Antonio Saura, Die Retrospektiv*,
Hatje Cantz, Berlin, 2012

The Fondation Archives Antonio Saura has registered this work
in their archives.



Niki DE SAINT PHALLE (1930 – 2002)

Nana Dawn (jaune)

1995

Painted resin

Edition: AP III/III (Edition of 5)

Signed and dated 'Niki de Saint Phalle 95' on the back of the left leg; signed again 'Niki' on the right foot, foundry stamp

56.7 x 44.9 x 16.1 in | 144 x 114 x 41 cm

PROVENANCE

Artist's studio

Private collection

LITERATURE

Lucia Pesapane and Annabelle Ténèze (ed.), *Niki de Saint Phalle. Les Années 1980 et 1990. L'art en liberté*, Gallimard | Les Abattoirs, Paris, 2022, ill. in colour p. 25

The Niki Charitable Art Foundation has registered this work in their archives.



Tom WESSELMANN (1931 – 2004)

Monica in Robe with Matisse

1986-1998

Alkyd on cut-out aluminium

Unique piece

Signed and dated 'Wesselmann '98' on the reverse

50 x 76 in | 127 x 193 cm

PROVENANCE

Artist's studio

Imago Gallery, Palm Desert, USA, 2004

Private collection, California, USA

Private collection, California, USA

Private collection

Anon. sale; Christie's, New York, 17 May 2024, lot 136



Tom WESSELMANN (1931 – 2004)

Rosemary Lying on one Elbow (Rubbed)
1989

Enamel on cut-out steel

Unique piece

Signed, titled and dated on the reverse

28 x 48 in | 71 x 121.9 cm

PROVENANCE

Estate of the artist

Carroll Janis collection, New York, 2007

Evan Janis Fine Arts, New York

The Estate of Tom Wesselmann has registered this work in its archives.



Fernando BOTERO (1932 – 2023)

Girl with Cat

1989

Oil on canvas

Signed 'Botero' on the lower right

66.7 x 48.7 in | 169.5 x 124 cm

PROVENANCE

James Goodman Gallery, New York

Private collection

Anon. sale; Fine Art Auctions, Miami, 4 December 2011, lot 207

Private collection

Anon. sale; Christie's, New York, 24-25 November 2014

Private collection, Monaco

EXHIBITED

Rome, Palazzo delle Esposizioni, 'Botero : antologica, 1949-1991', 11 December 1991–2 February 1992, exh. cat., No. 42, ill. in colour p. 75

LITERATURE

Edward J. Sullivan and Jean-Marie Tasset, *Fernando Botero. Monograph & Catalogue raisonne. Paintings, 1975-1990*, Acatos, Lausanne, 2000, No. 1989/12, ill. p. 449

Gérard Durazoi, *Botero*, Hazan, Paris, 1992, ill. in colour p. 54

Gilbert Lascault, *Botero,- La Pintura*, Lerner y Lerner Editores, Madrid and Cercle d'Art Editions, Paris, 1992, ill. in colour p. 206



Fernando BOTERO (1932 – 2023)

Picnic

2002

Oil on canvas

Signed and dated 'Botero 02' on the lower right

45.3 x 65.7 in | 115 x 167 cm

PROVENANCE

Artist's studio

Private collection

CERTIFICATE

The artist has confirmed the authenticity of this work.



Fernando BOTERO (1932 – 2023)

Picador

2002

Oil on canvas

Signed and dated 'Botero 02' on the lower right

76 x 53.5 in | 193 x 136 cm

PROVENANCE

Artist's studio

EXHIBITED

Madrid, Centro Centro, 'Botero. 60 años de pintura',
17 September 2020–28 February 2021, exh. cat., ill. in colour p. 153



Fernando BOTERO (1932 – 2023)

Circus People

2008

Oil on canvas

Signed and dated 'Botero 08' on the lower right

52 x 42.9 in | 132 x 109 cm

PROVENANCE

Artist's studio

Galerie Gmurzynska, Zug, Switzerland

Private collection

CERTIFICATE

The artist has confirmed the authenticity of this work.





Fernando BOTERO (1932 – 2023)

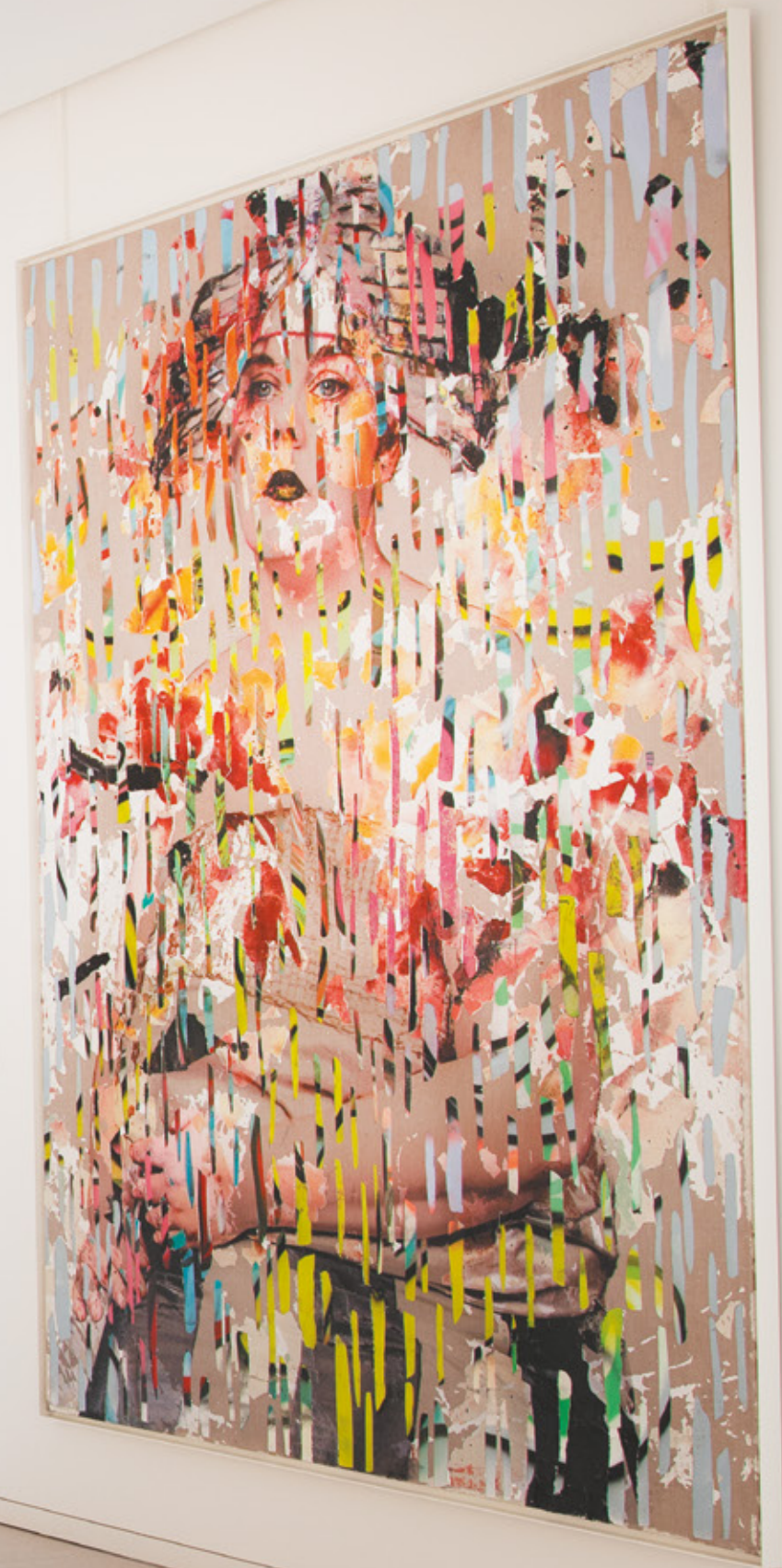
Reclining Woman with an Apple
2007

Bronze
Edition: 3/6
Signed, numbered and stamped 'Botero / 3/6 / FONDERIA ART. / F/
LLI BONVICINI / SOMMACAMPAGNA / ITALIA' on the base
21.5 x 56.5 x 21.1 in | 54.6 x 143.5 x 53.5 cm

PROVENANCE
Galleries Bartoux, Honfleur, France
Private collection, 2011

CERTIFICATE
The artist has confirmed the authenticity of this work.





Frank STELLA (1936 – 2024)

Estoril #XII, 4.75X (2nd version)
1982

Oil-stick, urethane enamel,
alkyd and Magna on etched magnesium
111.4 x 127.2 x 16.9 in | 283 x 323 x 43 cm

PROVENANCE

Private collection, USA
Galerie Leu, Munich
Ulrich Otto Sauer collection, Germany, 2006
Sotheby's, New York, 26 September 2019, lot 73
Private collection

EXHIBITED

New York, Edward Tyler Nahem Gallery, 'Autumn Selections Group
Show', 4 September–22 November 2006



Frank STELLA (1936 – 2024)

Est-ce que la baleine diminue ?
1988

Oil, oilstick and enamel on aluminum construction
80 x 144 x 36 in | 203.2 x 365.7 x 91.4 cm

PROVENANCE
Anon. sale; Sotheby's, New York, 16 November 1995, lot 386
M. Knoedler & Co., New York
Private collection, Nagoya, Japan
Anon. sale; Christie's, New York, 12 November 2003, lot 412
Private collection
Anon. sale; Christie's, New York, 5 March 2020, lot 38
Private collection



Bernar VENET (b. 1941)

Indeterminate Line

2012

Corten steel

Unique piece

106.3 x 135.4 x 78 in | 269.9 x 343.9 x 198.1 cm

PROVENANCE

Kasmin Gallery, New York

Private collection

The archives of Bernar Venet have registered
this work in their archives.



Bernar VENET (b. 1941)

Collapse-Indeterminate Lines
2022

Oilstick, graphite and collage on paper
Titled, signed and dated '-Collapse-Indeterminate lines -
B.Venet 2022' on the lower left
43.9 x 63.9 x 2 in | 111.5 x 162.3 x 5.1 cm

PROVENANCE
Artist's studio
Kasmin Gallery, New York
Private collection

The archives of Bernar Venet have registered
this work in their archives.



Manolo VALDÉS (b. 1942)

Vivianne I

2005

Oil, resin, sand, paper, string, staples and glue on canvas
and burlap collage on burlap

Signed, titled and dated 'M. VALDES NY 2005 Vivianne I'
on the reverse

89.8 x 75 in | 228 x 190.5 cm

PROVENANCE

Marlborough Gallery, London
Christie's, London, 23 June 2006, lot 208
Private collection

EXHIBITED

Baden-Baden, Museum Frieder Burda, 'Neue Malerei: Erwerbungen,
2002-2005', 25 February–25 June 2006, exh. cat., p. 134, ill. in colour p. 135



Manolo VALDÉS (b. 1942)

Les Tulipes noires

2008

Oil on burlap

Signed, titled and dated 'MVALDES Black Tulips 2008'
on the reverse

94.5 x 80.7 in | 240 x 205 cm

PROVENANCE

Marlborough Gallery, New York

Private collection

Anon. sale; Phillips, London, 14 February 2020, lot 142

Private collection



Manolo VALDÉS (b. 1942)

Retrato con sombrero de colores

2010

Oil, thread and burlap collage on burlap

Titled, dated and signed 'Retrato con sombrero / de colores / 2010 / MVALDES' on the reverse

64.6 x 56.3 in | 164 x 143 cm

PROVENANCE

Galerie Forsblom, Helsinki

Private collection

Anon. sale; Sotheby's, Milan, Modern & Contemporary Art,
12 April 2024, lot 47



Manolo VALDÉS (b. 1942)

Odalisca

2020

Mixed media on wood

Signed, titled and dated on the reverse

77.2 x 147.2 in | 196 x 374 cm

PROVENANCE

Artist's studio





Manolo VALDÉS (b. 1942)

Cristales de colores

2023

Resin and steel

Edition: 1/8

Signed with initials and numbered 'M.V. 1/8'
on the back of the head

78.5 x 130 x 19 in | 199.5 x 330 x 48.3 cm

PROVENANCE

Artist's studio



Manolo VALDÉS (b. 1942)

Doble cara en rosa

2023

Mixed media

96.5 x 147 in | 245.1 x 373.4 cm

PROVENANCE

Artist's studio



CHO Sung-Hee (b. 1949)

Lovely Pink Garden

2023

Mulberry paper and oil on canvas

Signed on the reverse

63.9 x 51.3 in | 162.2 x 130.3 cm

PROVENANCE

Artist's studio



CHO Sung-Hee (b. 1949)

Violet Garden

2023

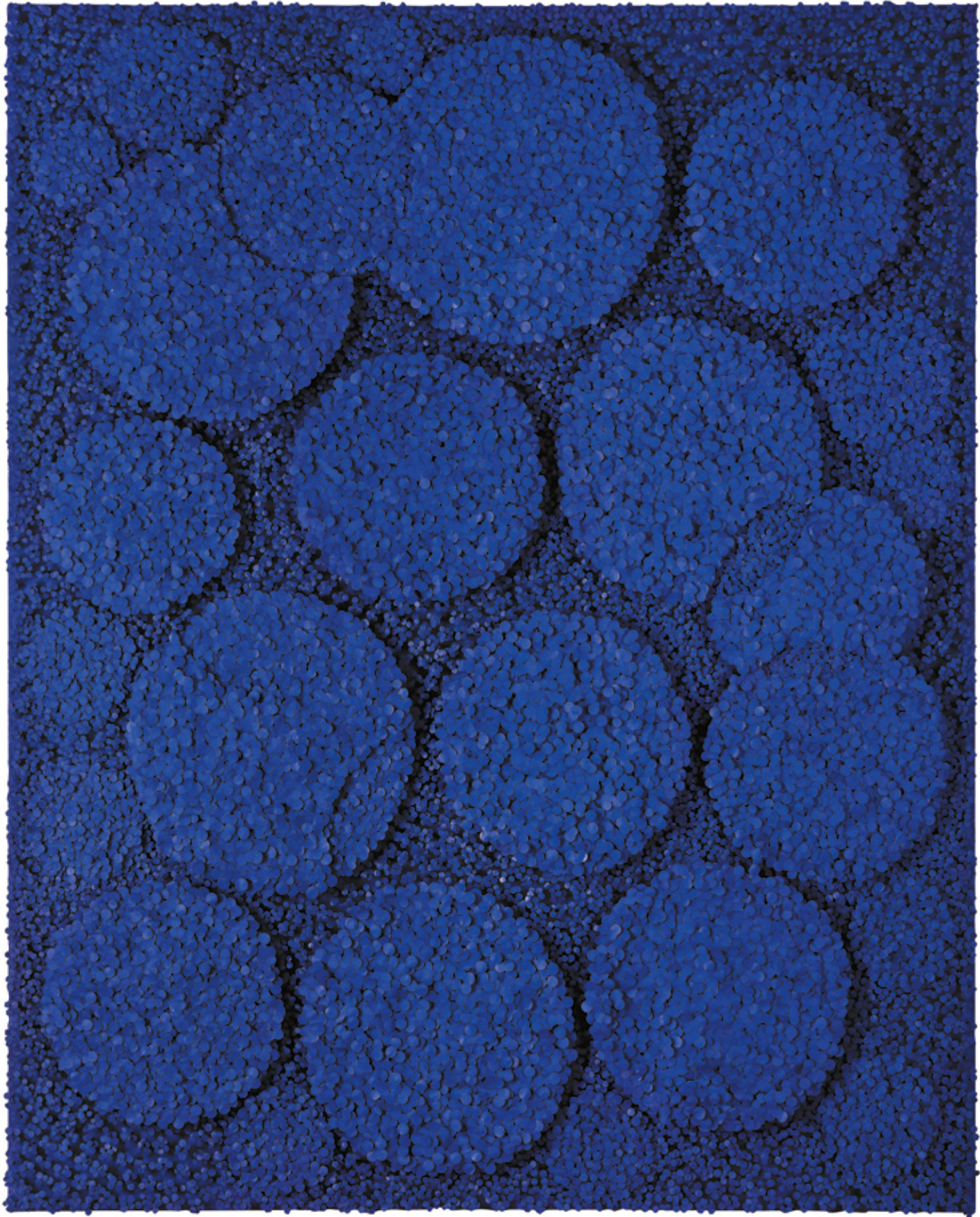
Mulberry paper and oil on canvas

Signed on the reverse

63.9 x 51.3 in | 162.2 x 130.3 cm

PROVENANCE

Artist's studio





Detail of Cho Sung-Hee, *Winter Garden (1)*, 2024

CHO Sung-Hee (b. 1949)

Winter Garden (A)

2024

Mulberry paper and oil on canvas

Signed and dated on the reverse

51.3 x 76.3 in | 130.3 x 193.9 cm

PROVENANCE

Artist's studio



George CONDO (b. 1957)

Figures on a Blue Couch
1996

Oil on canvas
68.1 x 75 in | 173 x 190.5 cm

PROVENANCE
Gagosian, New York
Private collection, 2017
Anon. sale; Sotheby's, Paris, 23 April 2024, lot 13



George CONDO (b. 1957)

Large Reclining Nude

2013

Ink and gesso on paper (in two parts)

Signed and dated '2013' on the upper left; signed again, dated and titled ' 2013 / Large Reclining / Nude' on a paper sheet stuck on the reverse

60.2 x 76.5 in | 153 x 194.3 cm

PROVENANCE

Skarstedt, New York

Private collection, New York



George CONDO (b. 1957)

Red Screaming Woman

2019

Oil and pigment stick on linen

Signed and dated 'Condo 2019' on the upper left

76 x 74 in | 193 x 188 cm

PROVENANCE

Skarstedt Gallery, New York

Private collection, 2019

Anon. sale; Christie's, Hong Kong, 28 November 2023, lot 35



Anselm REYLE (b. 1970)

Untitled

2009

Mixed media on canvas, wooden frame

Signed and dated '2009' on the reverse

95.3 x 75.2 in | 242 x 191 cm

PROVENANCE

Artist's studio



Anselm REYLE (b. 1970)

Untitled

2015

Mixed media on canvas, acrylic glass

Signed and dated '2015' on the reverse

56.3 x 48 x 7.1 in | 143 x 122 x 18 cm

PROVENANCE

Artist's studio



Anselm REYLE (b. 1970)

Untitled

2021

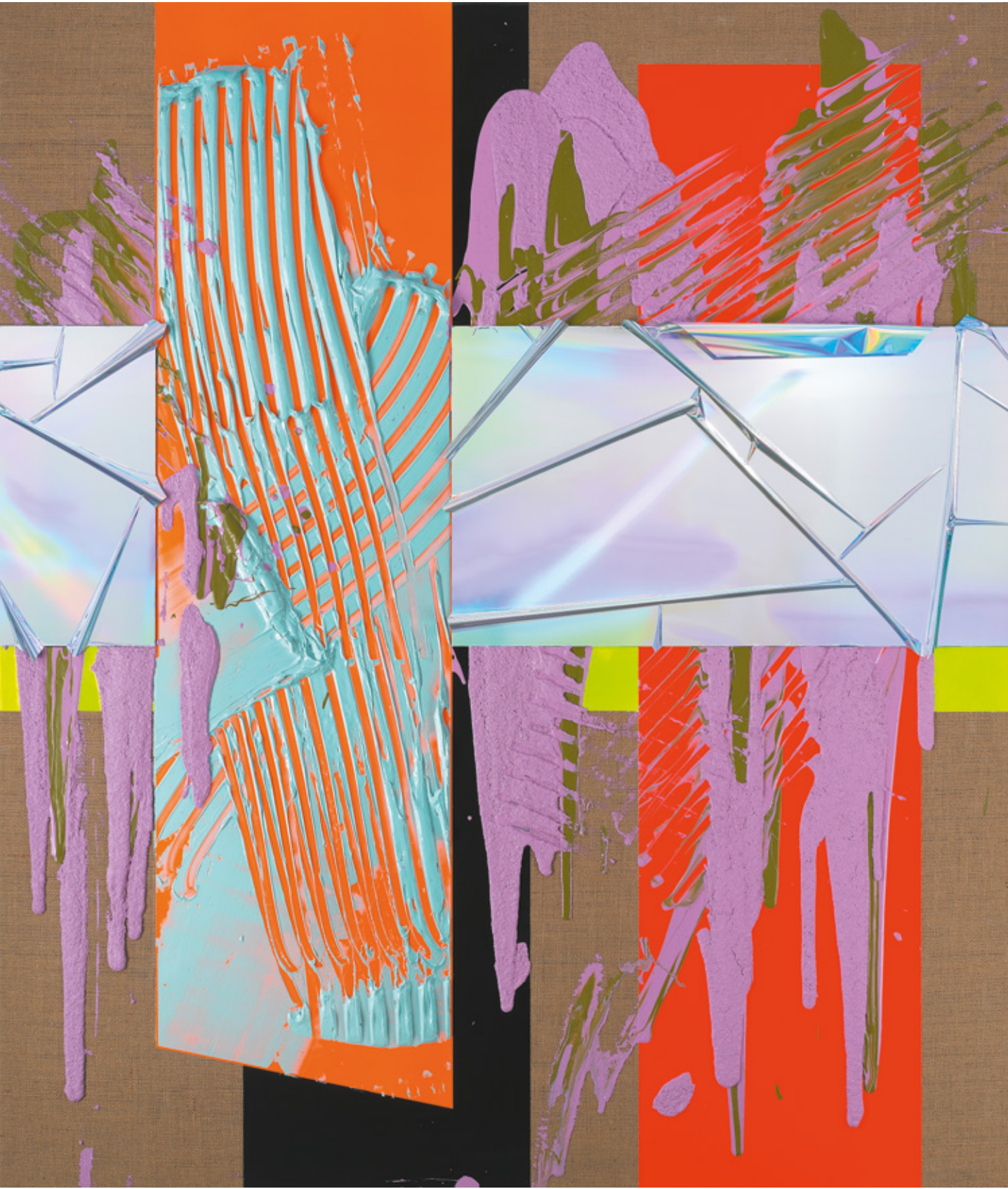
Mixed media on burlap

Signed and dated '2021' on the reverse

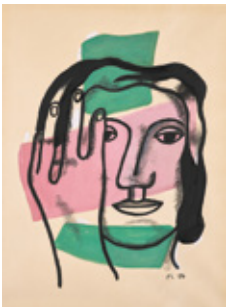
66.9 x 57.1 x 3.1 in | 170 x 145 x 8 cm

PROVENANCE

Artist's studio



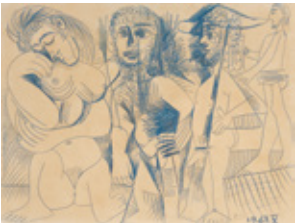
Index



pp. 6-9
Fernand LÉGER
Visage à la main
1950



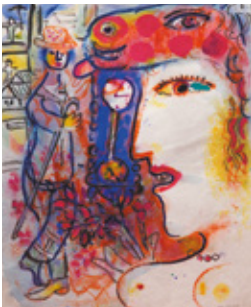
pp. 10-11
Fernand LÉGER
Figurine and Red Vase
1951



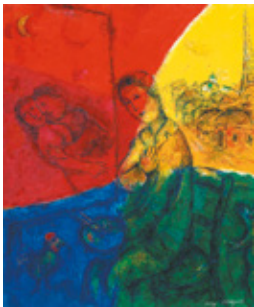
pp. 12-13
Pablo PICASSO
Trois hommes et femme nus
1967



pp. 14-15
Pablo PICASSO
Personnage (Homme)
1970



pp. 16-17
Marc CHAGALL
Profile
1959



pp. 18-19
Marc CHAGALL
The Painter
1976



pp. 20-21
Marc CHAGALL
Couple in the Moonlight
1980-1981



pp. 22-23
Joan MIRÓ
Femme dans la nuit
1942



pp. 24-25
Joan MIRÓ
Personnage (Character)
1974



pp. 26-27
Alexander CALDER
Caged Stone on Yellow Stalk
Circa 1955



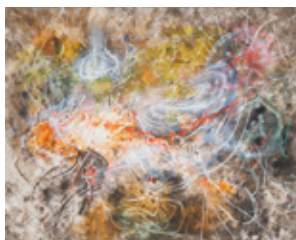
pp. 28-29
Alexander CALDER
Brothers, Right
1965



pp. 30-31
Jean DUBUFFET
Buste aux envols
1972



pp. 32-33
Jean DUBUFFET
Scène tragique
(site avec deux personnages)
1974



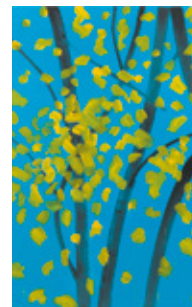
pp. 34-37
Roberto MATTA
Je viens du fruit perdu
1988



pp. 38-39
Pierre SOULAGES
Gouache sur papier,
65 x 50 cm, 1960
1960



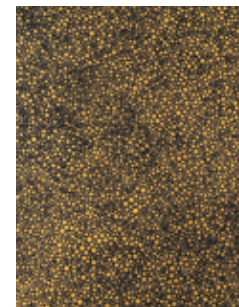
pp. 40-41
Pierre SOULAGES
Brou de noix et collage sur
papier marouflé sur toile
75 x 108 cm, 2004
2004



pp. 60-61
Alex KATZ
Autumn 6
2022



pp. 62-63
Andy WARHOL
Four Multicolored Marylins
(Reversal Series)
1979-1986



pp. 64-65
Yayoi KUSAMA
Gold Accumulation 2
1999



pp. 66-67
Yayoi KUSAMA
Chii-chan
2004



pp. 42-43
Karel APPEL
Space Animals
1970



pp. 44-45
Sam FRANCIS
Untitled
1965



pp. 46-49
Carlos CRUZ-DIEZ
Physichromie Panam 2129
1984



pp. 50-51
Carlos CRUZ-DIEZ
Physichromie Panam 246
2015



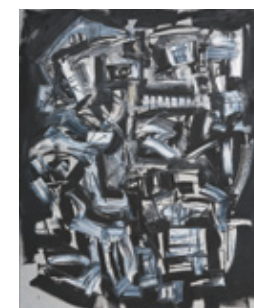
pp. 68-69
Yayoi KUSAMA
Chin
2004



pp. 70-73
Juan GENOVÉS
Aquí Allá
2015



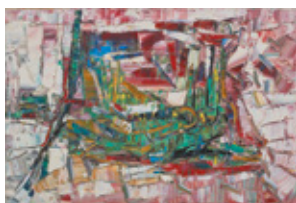
pp. 74-75
Juan GENOVÉS
Incisión
2019



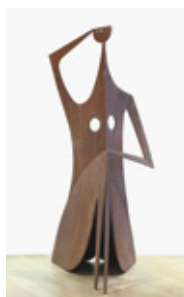
pp. 76-77
Antonio SAURA
Mirra
1956



pp. 52-53
Carlos CRUZ-DIEZ
Physichromie Panam 286
2018



pp. 54-55
Jean Paul RIOPELLE
Vérone
1962



pp. 56-57
Philippe HIQUILY
L'Epicurienne
2010



pp. 58-59
Alex KATZ
Hope
2012



pp. 78-79
Antonio SAURA
Don 1.91
1991



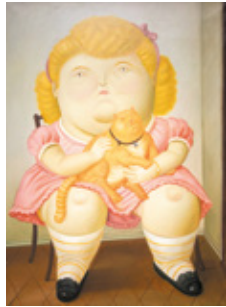
pp. 80-81
Niki DE SAINT PHALLE
Nana Dawn (jaune)
1995



pp. 82-83
Tom WESSELMANN
Monica in Robe with Matisse
1986-1998



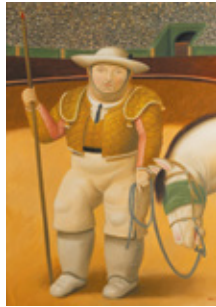
pp. 84-85
Tom WESSELMANN
Rosemary Lying
on one Elbow (Rubbed)
1989



pp. 86-87
Fernando BOTERO
Girl with Cat
1989



pp. 88-89
Fernando BOTERO
Picnic
2002



pp. 90-91
Fernando BOTERO
Picador
2002



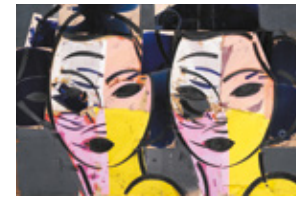
pp. 92-93
Fernando BOTERO
Circus People
2008



pp. 114-115
Manolo VALDÉS
Odalisca
2020



pp. 116-119
Manolo VALDÉS
Cristales de colores
2023



pp. 120-121
Manolo VALDÉS
Doble cara en rosa
2023



pp. 122-123
CHO Sung-Hee
Lovely Pink Garden
2023



pp. 94-97
Fernando BOTERO
Reclining Woman with an Apple
2007



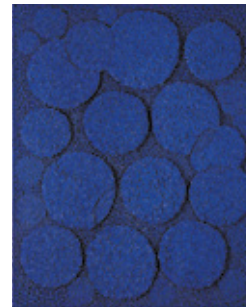
pp. 98-101
Frank STELLA
Estoril #XII, 4.75X (2nd version)
1982



pp. 102-103
Frank STELLA
Est-ce que la baleine diminue ?
1988



pp. 104-105
Bernar VENET
Indeterminate Line
2012



pp. 124-125
CHO Sung-Hee
Violet Garden
2023



pp. 126-129
CHO Sung-Hee
Winter Garden (A)
2024



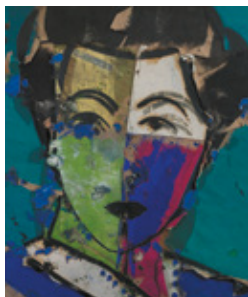
pp. 130-131
George CONDO
Figures on a Blue Couch
1996



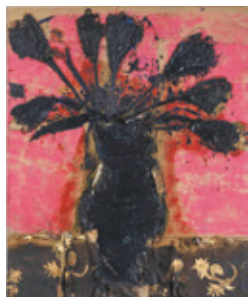
pp. 132-133
George CONDO
Large Reclining Nude
2013



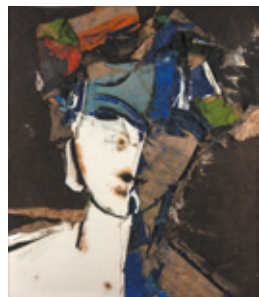
pp. 106-107
Bernar VENET
Collapse-Indeterminate Lines
2022



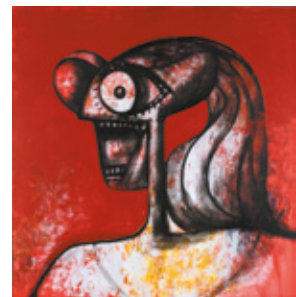
pp. 108-109
Manolo VALDÉS
Vivianne I
2005



pp. 110-111
Manolo VALDÉS
Les Tulipes noires
2008



pp. 112-113
Manolo VALDÉS
Retrato con sombrero de colores
2010



pp. 134-135
George CONDO
Red Screaming Woman
2019



pp. 136-137
Anselm REYLE
Untitled
2009



pp. 138-139
Anselm REYLE
Untitled
2015



pp. 140-141
Anselm REYLE
Untitled
2021

This exhibition catalogue is created upon the occasion of the exhibition
'Unveiling Masters in the City' presented by Opera Gallery Miami
from 3 December 2024 – 2 January 2025.

ACKNOWLEDGMENTS
We extend our gratitude to all the individuals who contributed to this extraordinary exhibition.

COORDINATION
Dan Benchetrit (Director, Opera Gallery Miami)
Shana Dyan Benchetrit (Co-Director, Opera Gallery Miami)
Lana Martinez (Art Advisor, Opera Gallery Miami)
Adriana Urdaneta (Office and Logistics Manager, USA)
Salome Dyan Sarfati (Director Marketing, USA)
Samia Rabehi (Director Communications, Opera Gallery Group)
Katherine McMahon (Press and Communications Director, USA & Europe)
Louise Bassou (Communications Manager, Opera Gallery Group)
Aurélie Heuzard (Communications Manager, Opera Gallery Group)

CATALOGUE

AUTHOR
Dan Benchetrit

ICONOGRAPHIC RESEARCH
Anaïs Chombar

PROOFREADERS
Louise Bassou
Anaïs Chombar
Aurélie Heuzard

GRAPHIC DESIGN
Willie Kaminski

PRINTER
Ethap

COVER
Yayoi Kusama, *Gold Accumulation 2*, 1999

All rights reserved. Except for the purpose of review, no part of this book should be reproduced,
stored in a retrieval system, or transmitted, in any form or by any means, electronic, mechanical,
photocopying, recording or otherwise, without the prior permission of the publishers.

OPERA GALLERY

151 NE 41st Street, suite 131, Miami, FL 33137
T. +1 305-868-3337
miami@operagallery.com
operagallery.com

OPERA GALLERY

151 NE 41st Street, suite 131, Miami, FL 33137